



*NYAC YC / HUGUENOT YC*  
*37<sup>th</sup> TURKEY DAY REACH*  
*November 28, 2020*



## Sailing Instructions

### 1 RULES

- 1.1 The Turkey Day Reach is conducted in accordance with the Racing Rules of Sailing as issued by the ISAF, including US Sailing prescription, except as modified herein.
- 1.2 Class weight limits are waived as per YRALIS PHRF Weight Limits Waiver Letter.
- 1.3 This event will be a **Pursuit Style Race start and finish**.
- 1.4 Autopilots are allowed for all boats sailing with total crew count onboard of 1 or 2.
- 1.5 There will be two divisions (spinnaker and non-spinnaker) with the slowest boat in each division starting at 1100.
- 1.6 Finish times will be recorded by each boat and reported to the Race Committee by text and email.

### 2 SCHEDULE OF EVENTS

- 2.1 The event is listed on YachtScoring at (<https://yachtscoring.com/emenu.cfm?eid=13218>).
- 2.2 Only one race is scheduled.
- 2.3 The scheduled start time is 1100.
- 2.4 Classes will fly class flags in accordance with division splits on the Scratch Sheet on the event page of Yacht Scoring website for the [37<sup>th</sup> Turkey Day Reach](#).
- 2.5 Scratch Sheets listing each boat by its class will be available by 1800 on Friday, November 24<sup>th</sup> online at [37<sup>th</sup> Turkey Day Reach](#).

### 3 RADIO COMMUNICATION:

- 3.1 The Race Committee will broadcast on and monitor VHF channel 73. Competitors should monitor VHF channel 73.
- 3.2 The race committee will also announce any course changes prior to the start of the race over VHF channel 73.
- 3.3 Except in an emergency, a boat shall neither make radio transmissions while racing nor receive radio communications not available freely to all boats. This restriction also applies to mobile telephones.

### 4 THE START

- 4.1 The starting line will be a 100 yard line extending due west of Can 1, on a bearing of 270 degrees Magnetic from Can 1. (0.8 nm North of Execution Rocks)
- 4.2 The Spinnaker class will be Division 1 and the Non-Spinnaker Class will be Division 2.
- 4.3 Boats will start based on the Pursuit start times published no later than 1800 on Friday, November 27<sup>th</sup> online at [37<sup>th</sup> Turkey Day Reach](#).
- 4.4 Boats will not enter the start area (rectangular area behind the starting line, extending 50 yards due South from Can 1), unless their start time is within two minutes of their designated start.

### 5 COURSES

- 5.1 Each Division will sail the course specified in Appendix D.
- 5.2 All boats shall start at their designated time (See Appendix E) by passing Can 1 to starboard, using a starting line starting line extending 100 yards west of Can 1, on a bearing of 270 degrees Magnetic.



*NYAC YC / HUGUENOT YC*  
*37<sup>th</sup> TURKEY DAY REACH*  
*November 28, 2020*

**Sailing Instructions**



## 6 PENALTY SYSTEM

- 6.1 Two Turns Penalty, will apply.

## 7 THE FINISH

- 7.1 A boat is considered finished when it has completed its designated Division course and its bow has passed between Fl R"2" and Huckleberry Island.
- 7.2 Upon finishing, each Yacht shall record its finish time and report the finish time to the RC by texting 917 488 3234. Text shall include the Yacht Name and finish time.

## 8 TIME LIMIT

- 8.1 The time limit for all boats to finish in each class is 4 hours (1500 HRs). Boats which have not finished within the time limit will be scored TLE (Time Limit Expired).

## 9 NOTICES TO COMPETITORS

- 9.1 Notices to competitors and final scratch sheet will be posted on the event race page no later than 1800 on November 27: [37<sup>th</sup>TurkeyDayReach](#) .
- 9.2 New notices may also be announced by the race committee on VHF channel 73.

## 10 CHANGES TO SAILING INSTRUCTIONS

- 10.1 Any change to the sailing instructions will be posted on [37<sup>th</sup>TurkeyDayReach](#) on or before 0800 on the day of the race and will also be announced to competitors on VHF channel 73.

## 11 PROTESTS

- 11.1 Protests are discouraged except in the event of serious violations of the rules or in the event of contact and/or damage to yachts.
- 11.2 To initiate a protest, the protested yacht must be notified! A RED protest flag must be flown from your backstay as soon after the infraction as possible, and carried until the finish line is crossed.
- 11.3 Notification to the RC on VHF channel 73 and by texting to 917 488 3234 is required within one hour of the end of the race
- 11.4 A Virtual Protest Hearing then be organized and completed no later than Friday, December 4th.

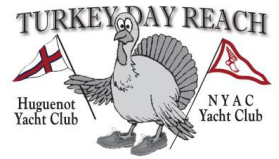
## 12 SAFETY REGULATIONS

- 12.1 All participating boats should check in with the RC on VHF Channel 73 no later than 1050 and providing boat name, skipper name and sail numbers.
- 12.2 A boat that retires from a race shall hail the RC on VHF channel 73 and by texting to 917 488 3234, providing boat name and intention to retire.
- 12.3 Each boat shall carry a radio capable of transmitting and receiving VHF channel 73.



*NYAC YC / HUGUENOT YC*  
*37<sup>th</sup> TURKEY DAY REACH*  
*November 28, 2020*

**Sailing Instructions**



**13 MEASUREMENTS**

- 13.1 Each boat shall produce a valid PHRF rating certificate. The Race Committee will assign PHRF handicaps for boats without rating certificates.
- 13.2 Minimum and maximum weight limits listed on the PHRF certificates will not be enforced nor adjusted for.

**14 Contact Information**

- 14.1 NYAC YC Race Organizer: Alex Helfand, [ahelfand534@gmail.com](mailto:ahelfand534@gmail.com) 917 488 3234
- 14.2 HYC Race Organizer: Bill McCulloch, [bill\\_mcculloch@hotmail.com](mailto:bill_mcculloch@hotmail.com) 201 757 0448
- 14.3 Emergency Contact Numbers
- 14.4 General Questions: [nyac.sailing@gmail.com](mailto:nyac.sailing@gmail.com)



*NYAC YC / HUGUENOT YC*  
*37<sup>th</sup> TURKEY DAY REACH*

*November 28, 2020*

**Sailing Instructions**

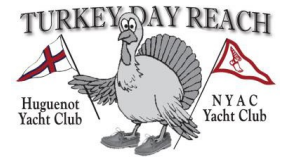


**APPENDIX A: COURSE MARKS**

<b>Mark Label</b>	<b>Gov't Mark</b>	<b>Location</b>
A	Can "1"	0.8 nm. North of Execution Rocks
B	Bell "23"	0.8 nm. East of Execution Rocks
C	Gong "1"	0.2 nm. East of Hart Island
D	Fl. G "25"	0.4 nm. of Northwest of Sands Point
E	Gong "27"	Gangway Rock
F	Fl. R "2"	1.5 nm. North of Execution Rocks
G	Can "1"	0.5 nm. Northeast of Larchmont Breakwater
H	Fl. G "29"	0.2 nm. North of Hewlett Point
J	Fl. R "2"	0.1 nm. North of Huckleberry Island
K	Fl. R "42"	1.0 nm. SSW of Peningo Neck flagpole, (American Y. C./Milton Pt.)
M	Fl. G "21"	Matinicock Point
N	Can "1"	Weeks Point
U	Fl. Y "A"	UConn Execution Rocks Weather Buoy



**NYAC YC / HUGUENOT YC**  
**37<sup>th</sup> TURKEY DAY REACH**  
 November 28, 2020



**Sailing Instructions**

**APPENDIX B: Magnetic Courses and Nautical Mile Distances Between Marks**

TO FRO M	A	B	C	D	E	F	G	H	J	K	M	N	P	R	U
A		136° 1.1 nm	224° 2.4 nm	196° 1.4 nm	207° 2.0 nm	002° 0.7 nm	033° 2.0 nm	210° 3.1 nm	282° 0.9 nm	050° 2.5 nm	090° 4.6 nm	115° 3.6 nm	080° 0.8 nm	260° 0.7 nm	157° 0.6 nm
B	316° 1.1 nm		248° 2.6 nm	244° 1.3 nm	238° 2.0 nm	334° 1.6 nm	008° 2.4 nm	230° 3.0 nm	300° 1.9 nm	027° 2.6 nm	079° 4.0 nm	108° 2.6 nm	003° 0.9 nm	294° 1.6 nm	292° 0.6 nm
C	044° 2.4 nm	068° 2.6 nm		072° 1.3 nm	098° 0.7 nm	035° 3.0 nm	039° 4.4 nm	173° 1.0 nm	021° 2.1 nm	047° 4.9 nm	075° 6.5 nm	088° 4.9 nm	052° 3.1 nm	031° 1.9 nm	058° 2.2 nm
D	016° 1.4 nm	064° 1.3 nm	252° 1.3 nm		227° 0.8 nm	012° 2.1 nm	026° 3.3 nm	220° 1.8 nm	340° 1.6 nm	038° 3.7 nm	075° 5.2 nm	094° 3.6 nm	039° 1.8 nm	345° 1.2 nm	038° 1.0 nm
E	027° 2.0 nm	058° 2.0 nm	278° 0.7 nm	047° 0.8 nm		021° 2.7 nm	030° 4.0 nm	215° 1.1 nm	000° 2.1 nm	040° 4.5 nm	072° 5.8 nm	086° 4.2 nm	041° 2.6 nm	008° 1.7 nm	042° 1.7 nm
F	182° 0.7 nm	154° 1.6 nm	215° 3.0 nm	192° 2.1 nm	201° 2.7 nm		048° 1.4 nm	205° 3.8 nm	241° 1.1 nm	065° 2.1 nm	099° 4.7 nm	113° 4.5 nm	127° 1.0 nm	221° 1.1 nm	171° 1.3 nm
G	213° 2.0 nm	188° 2.4 nm	219° 4.4 nm	206° 3.3 nm	210° 4.0 nm	228° 1.4 nm		211° 5.4 nm	234° 2.5 nm	093° 0.9 nm	115° 3.9 nm	146° 3.9 nm	190° 1.5 nm	225° 2.5 nm	201° 2.4 nm
H	030° 3.1 nm	050° 3.0 nm	353° 1.0 nm	040° 1.8 nm	035° 1.1 nm	025° 3.8 nm	031° 5.4 nm		012° 3.0 nm	039° 5.5 nm	066° 6.7 nm	077° 4.9 nm	039° 3.7 nm	018° 2.7 nm	039° 2.8 nm
J	102° 0.9 nm	120° 1.9 nm	201° 2.1 nm	160° 1.6 nm	180° 2.1 nm	061° 1.1 nm	054° 2.5 nm	192° 3.0 nm		064° 3.2 nm	092° 5.6 nm	113° 4.5 nm	092° 1.7 nm	144° 0.4 nm	122° 1.4 nm
K	230° 2.5 nm	207° 2.6 nm	227° 4.9 nm	218° 3.7 nm	220° 4.5 nm	245° 2.1 nm	273° 0.9 nm	219° 5.5 nm	244° 3.2 nm		121° 3.1 nm	157° 3.4 nm	218° 1.9 nm	236° 3.1 nm	218° 2.7 nm
M	270° 4.6 nm	259° 4.0 nm	255° 6.5 nm	255° 5.2 nm	252° 5.8 nm	279° 4.7 nm	295° 3.9 nm	246° 6.7 nm	272° 5.6 nm	301° 3.1 nm		222° 2.1 nm	272° 3.8 nm	269° 5.3 nm	263° 4.4 nm
N	295° 3.6 nm	288° 2.6 nm	268° 4.9 nm	274° 3.6 nm	266° 4.2 nm	293° 4.5 nm	326° 3.9 nm	257° 4.9 nm	293° 4.5 nm	337° 3.4 nm	042° 2.1 nm		304° 3.0 nm	289° 4.2 nm	288° 3.2 nm
P	260° 0.8 nm	183° 0.9 nm	232° 3.1 nm	219° 1.8 nm	221° 2.6 nm	307° 1.0 nm	010° 1.5 nm	219° 3.7 nm	272° 1.7 nm	038° 1.9 nm	092° 3.8 nm	124° 3.0 nm		260° 1.5 nm	220° 0.9 nm
R	080° 0.7 nm	114° 1.6 nm	211° 1.9 nm	165° 1.2 nm	188° 1.7 nm	041° 1.1 nm	045° 2.5 nm	198° 2.7 nm	324° 0.4 nm	056° 3.1 nm	089° 5.3 nm	109° 4.2 nm	080° 1.5 nm		114° 1.0 nm
U	337° 0.6 nm	112° 0.6 nm	238° 2.2 nm	218° 1.0 nm	222° 1.7 nm	351° 1.3 nm	021° 2.4 nm	219° 2.8 nm	302° 1.4 nm	038° 2.7 nm	083° 4.4 nm	108° 3.2 nm	040° 0.9 nm	294° 1.0 nm	

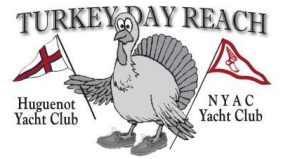
It is the responsibility of every competitor to be aware of the U.S. Rules of the Road, and that they do not become a "privileged" vessel when participating in a race. This is especially true in meeting, crossing or overtaking situations with a non-participant and/or vessels constrained by their draft or ability to maneuver



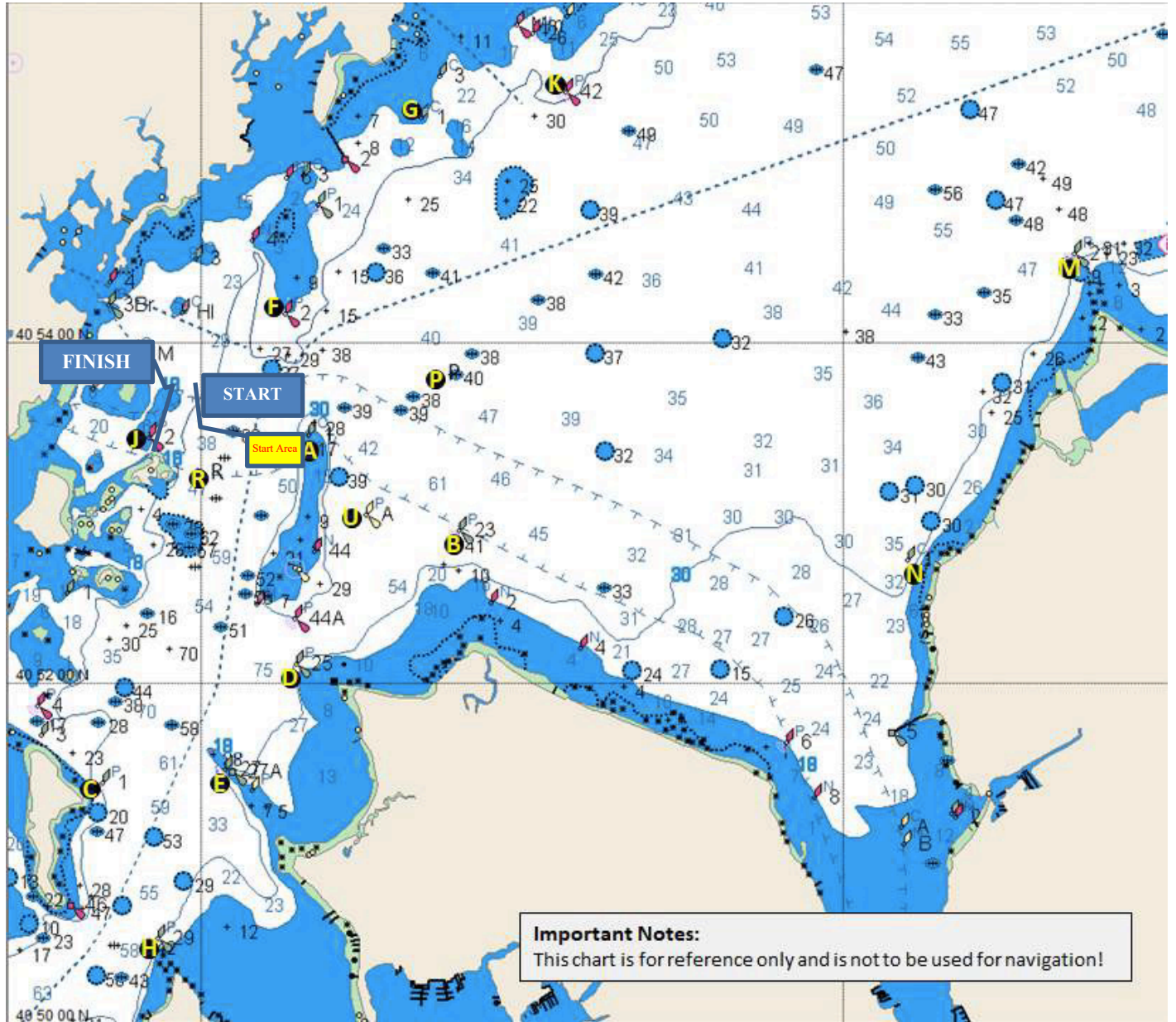
**NYAC YC / HUGUENOT YC**  
**37<sup>th</sup> TURKEY DAY REACH**

**November 28, 2020**

**Sailing Instructions**



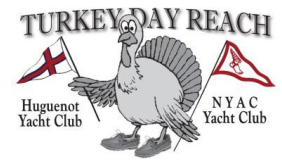
**APPENDIX C. RACE COURSE CHARTLET**







**NYAC YC / HUGUENOT YC**  
**37<sup>th</sup> TURKEY DAY REACH**  
*November 28, 2020*  
**Sailing Instructions**



**APPENDIX D: RACE COURSES**

**DIVISION 1**

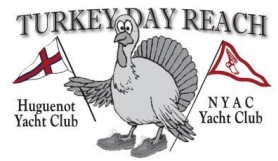
	MARK	Notes	Mark Rounding	Distance (NM)
START	CAN 1	Mark A on Chart Cross bearing line 270 degrees at designated start time with Can 1 to Starboard	Starboard	
	Fl. R "42"	Mark K on Chart	Round to Starboard	2.5
	Fl. G "21"	Mark M on Chart	Round to Starboard	3.1
	Bell "23"	Mark B on Chart	Round to Starboard	4.0
	Fl. R "2"	Mark F on Chart	Round to Port	1.6
FINSIH	Fl. R "2"	Mark J on Chart	Round to Starboard	1.1
				12.3

**DIVISION 2**

	MARK	Notes	Mark Rounding	Distance (NM)
START	CAN 1	Mark A on Chart Cross bearing line 270 degrees at designated start time with Can 1 to Starboard	Starboard	
	Can "1"	Mark G on Chart	Round to Starboard	2.0
	Can "1"	Mark N on Chart	Round to Starboard	3.9
	Bell "23"	Mark B on Chart	Round to Starboard	2.6
	Can "1"	Mark A on Chart	Round to Port	1.1
FINSIH	Fl. R "2"	Mark J on Chart	Round to Starboard	0.9
				10.5



**NYAC YC / HUGUENOT YC**  
**37<sup>th</sup> TURKEY DAY REACH**  
*November 28, 2020*



**Sailing Instructions**

APPENDIX E: START TIMES

<b>DIVISION 1</b>		<b>Distance</b>	<b>12.3 NM</b>	<b>Division Start Time</b>	<b>11:00:00</b>
<b>scratch boat</b>	<b>Sail No</b>	<b>Boat Name</b>	<b>PHRF</b>	<b>Boat Start Time</b>	<b>Delta time from scratch boat</b>
	<b>24</b>	<b>Thin Man</b>	<b>69</b>	<b>11:00:00</b>	<b>0:17:13</b>
	<b>444</b>	<b>Runaway</b>	<b>36</b>	<b>11:06:46</b>	<b>0:10:27</b>
	<b>1131</b>	<b>Soulmates</b>	<b>18</b>	<b>11:10:27</b>	<b>0:06:46</b>
	<b>407</b>	<b>Sundari</b>	<b>-15</b>	<b>11:17:13</b>	<b>0:00:00</b>

DIVISION 2

<b>DIVISION 2</b>		<b>Distance</b>	<b>10.5 NM</b>	<b>Division start time</b>	<b>11:00:00</b>
<b>scratch boat</b>	<b>Sail No</b>	<b>Boat Name</b>	<b>PHRF</b>	<b>Boat Start Time</b>	<b>Delta time from scratch boat</b>
	<b>1936</b>	<b>Aegir</b>	<b>204</b>	<b>11:00:00</b>	<b>0:24:09</b>
	<b>244</b>	<b>En Passant</b>	<b>192</b>	<b>11:02:06</b>	<b>0:22:03</b>
	<b>12115</b>	<b>Eclipse</b>	<b>186</b>	<b>11:03:09</b>	<b>0:21:00</b>
	<b>43</b>	<b>Loon</b>	<b>184</b>	<b>11:03:30</b>	<b>0:20:39</b>
	<b>2979</b>	<b>Spectra</b>	<b>168</b>	<b>11:06:18</b>	<b>0:17:51</b>
	<b>52376</b>	<b>Hideaway</b>	<b>150</b>	<b>11:09:27</b>	<b>0:14:42</b>
	<b>33</b>	<b>IBIS</b>	<b>150</b>	<b>11:09:27</b>	<b>0:14:42</b>
	<b>52463</b>	<b>Impulse</b>	<b>138</b>	<b>11:11:33</b>	<b>0:12:36</b>
	<b>461</b>	<b>Epika</b>	<b>115</b>	<b>11:15:35</b>	<b>0:08:34</b>
	<b>None</b>	<b>Timeout</b>	<b>114</b>	<b>11:15:45</b>	<b>0:08:24</b>
	<b>588</b>	<b>Shadowfox</b>	<b>108</b>	<b>11:16:48</b>	<b>0:07:21</b>
<b>2101</b>	<b>Apsara</b>	<b>66</b>	<b>11:24:09</b>	<b>0:00:00</b>	